

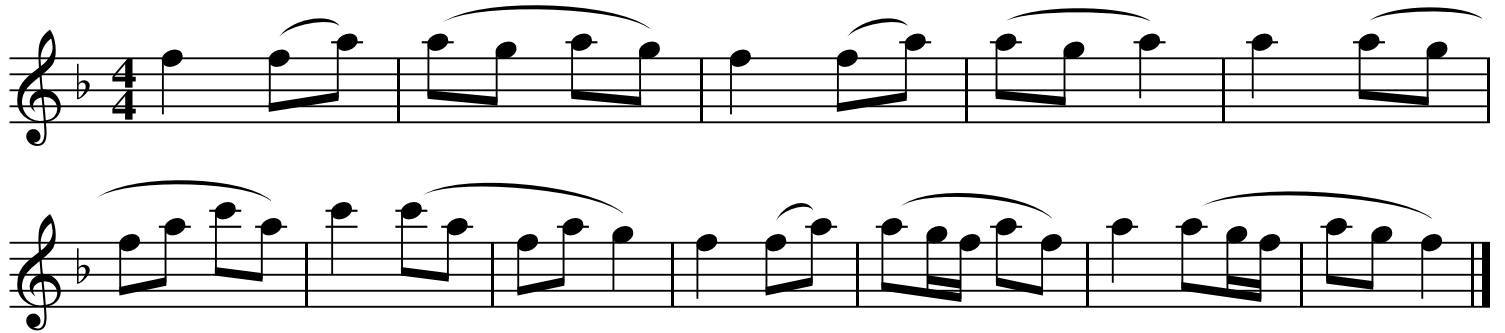
# Comptines diverses

Trad.

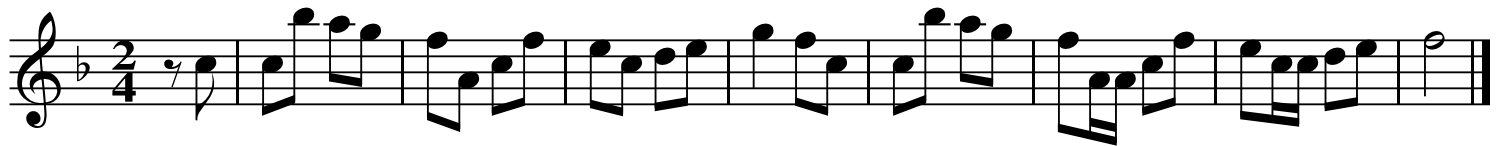
## Sur le pont d'Avignon



## À la claire fontaine



## Maman les p'tits bateaux



## Il était un petit navire



## Sur le pont du nord



## Colchiques

Musical score for 'Colchiques' in 3/8 time. The first staff contains the melody, and the second staff contains the accompaniment. The piece concludes with a double bar line.

## J'ai descendu dans mon jardin

Musical score for 'J'ai descendu dans mon jardin' in 2/4 time. The score begins with a repeat sign and a fermata. It consists of a single staff with a melody and accompaniment.

## Alouette

Musical score for 'Alouette' in 4/4 time. The first staff contains the melody, and the second staff contains the accompaniment. The word 'Fin' is written at the end of the first staff.

## Cadet Rousselle

Musical score for 'Cadet Rousselle' in 6/8 time. The score begins with a repeat sign and a fermata. It consists of a single staff with a melody and accompaniment.

## La mère Michel

Musical score for 'La mère Michel' in 2/4 time. The score consists of four staves, each containing a line of the melody and accompaniment.

### Dimanche matin

Musical notation for 'Dimanche matin' in 2/4 time, consisting of three staves. The melody is written in treble clef and features a mix of quarter, eighth, and sixteenth notes, with some rests and a final double bar line.

### Trois jeunes tambours

Musical notation for 'Trois jeunes tambours' in 3/8 time, consisting of three staves. The melody is written in treble clef and includes quarter, eighth, and sixteenth notes, with some slurs and a final double bar line.

### Il était un petit homme

Musical notation for 'Il était un petit homme' in 3/4 time, consisting of two staves. The melody is written in treble clef and features quarter and eighth notes, with a key signature change to 2/4 in the second staff and a final double bar line.

### J'ai du bon tabac

Musical notation for 'J'ai du bon tabac' in 2/4 time, consisting of three staves. The melody is written in treble clef and features a mix of quarter and eighth notes, with repeat signs and a final double bar line.

### Ah! dis-moi donc bergère

Two staves of musical notation in 2/4 time. The first staff begins with a treble clef and a 2/4 time signature. The melody consists of eighth and quarter notes, with a fermata over the final note. The second staff continues the melody with similar rhythmic patterns, ending with a double bar line.

### Frère Jacques

Two staves of musical notation in 2/4 time. The first staff begins with a treble clef and a 2/4 time signature. The melody is a simple, repetitive sequence of quarter notes. The second staff continues the melody, featuring some beamed eighth notes and ending with a double bar line.

### Fais dodo

Three staves of musical notation in 6/8 time. The first staff begins with a treble clef and a 6/8 time signature. The melody is a simple, repetitive sequence of quarter notes. The second and third staves continue the melody with similar rhythmic patterns, ending with a double bar line.

### Ne pleure pas Jeannette

Two staves of musical notation in 2/4 time. The first staff begins with a treble clef and a 2/4 time signature. The melody consists of quarter and eighth notes, with a fermata over the final note. The second staff continues the melody with similar rhythmic patterns, ending with a double bar line.

### Dans la forêt lointaine

Two staves of musical notation in 2/4 time. The first staff begins with a treble clef and a 2/4 time signature. The melody consists of quarter and eighth notes, with a fermata over the final note. The second staff continues the melody with similar rhythmic patterns, ending with a double bar line.

# Mon beau sapin

Musical notation for 'Mon beau sapin' in G major, 4/4 time. The piece consists of three staves. The first staff contains the first four measures, with a 3/4 time signature change in the second measure. The second staff contains the next four measures, with a 4/4 time signature change in the fourth measure. The third staff contains the final two measures, ending with a double bar line.

# Vent frais

Musical notation for 'Vent frais' in G major, 4/4 time. The piece consists of two staves. The first staff contains the first six measures, ending with a repeat sign. The second staff contains the next six measures, ending with a double bar line.

# Stille nacht

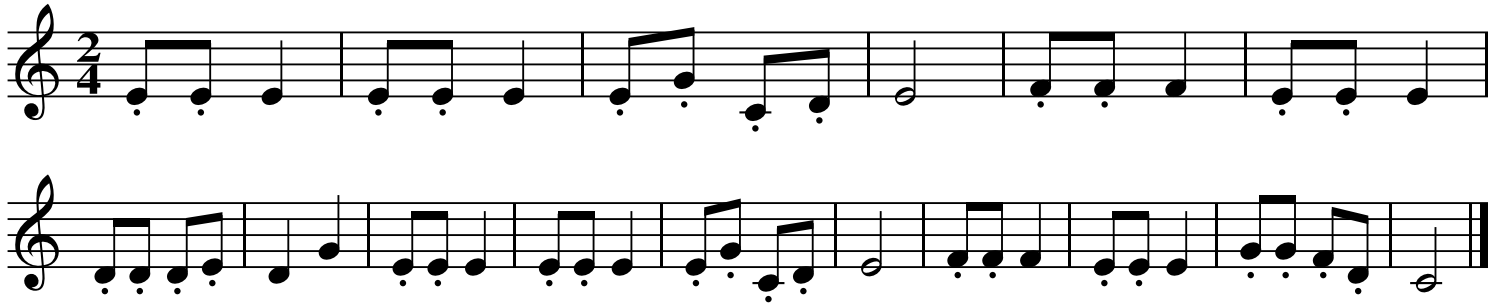
... en Sib

Musical notation for 'Stille nacht' in G major, 3/4 time. The piece consists of three staves. The first staff contains the first six measures. The second staff contains the next six measures, starting with a repeat sign. The third staff contains the final six measures, ending with a double bar line.

... en Mib

Musical notation for 'Stille nacht' in D minor, 3/4 time. The piece consists of three staves. The first staff contains the first six measures. The second staff contains the next six measures, starting with a repeat sign. The third staff contains the final six measures, ending with a double bar line.

## Jingle bells



♩ = 90

## Y'a un monstre



QR-Code du MP3



Notes: Partition pour clarinette Sib

Transcription: Roger Négaret, 10 décembre 2006 (roger.negaret@laposte.net)