

# Gavotte : Suite montagne du Bagad Ergué Armel

*Ton kentan*

Trad. (Bretagne)

**A**

♩ = 120

Section A consists of three staves of music in 4/4 time, key of B-flat major. The tempo is marked as ♩ = 120. The first staff begins with a repeat sign and contains measures 1-4, with a triplet of eighth notes in measure 1 and another in measure 4. The second staff contains measures 5-8, with triplets in measures 6 and 8. The third staff contains measures 9-12, with triplets in measures 9 and 12, and ends with a double bar line and repeat dots.

**B**

Section B consists of three staves of music in 4/4 time, key of B-flat major. The first staff begins with a repeat sign and contains measures 13-16, with triplets in measures 13, 15, and 16. The second staff contains measures 17-20, with triplets in measures 17, 19, and 20. The third staff contains measures 21-24, with triplets in measures 21 and 24, and ends with a double bar line and repeat dots.

**C**

Section C consists of three staves of music in 4/4 time, key of B-flat major. The first staff begins with a repeat sign and contains measures 25-28, with triplets in measures 25, 27, and 28. The second staff contains measures 29-32, with triplets in measures 29, 31, and 32. The third staff contains measures 33-36, with triplets in measures 33 and 36, and ends with a double bar line and repeat dots.

**D**

Section D consists of one staff of music in 4/4 time, key of B-flat major. It begins with a repeat sign and contains measures 37-40, with triplets in measures 39 and 40, and ends with a double bar line and repeat dots.

The image shows two staves of musical notation in G major (one sharp). The first staff contains 12 measures. The first measure has a dotted quarter note G4, an eighth note A4, and an eighth note B4. The second measure has a dotted quarter note C5, an eighth note B4, and an eighth note A4. The third measure has a dotted quarter note G4, an eighth note F4, and an eighth note E4. The fourth measure has a dotted quarter note D4, an eighth note C4, and an eighth note B3. The fifth measure has a dotted quarter note A3, an eighth note G3, and an eighth note F3. The sixth measure has a dotted quarter note E3, an eighth note D3, and an eighth note C3. The seventh measure has a dotted quarter note B2, an eighth note A2, and an eighth note G2. The eighth measure has a dotted quarter note F2, an eighth note E2, and an eighth note D2. The ninth measure has a dotted quarter note C3, an eighth note B2, and an eighth note A2. The tenth measure has a dotted quarter note B2, an eighth note A2, and an eighth note G2. The eleventh measure has a dotted quarter note A2, an eighth note G2, and an eighth note F2. The twelfth measure has a dotted quarter note G2, an eighth note F2, and an eighth note E2. A triplet of eighth notes (G2, F2, E2) is marked with a '3' below it. The second staff contains 12 measures. The first measure has a dotted quarter note G4, an eighth note A4, and an eighth note B4. The second measure has a dotted quarter note C5, an eighth note B4, and an eighth note A4. The third measure has a dotted quarter note G4, an eighth note F4, and an eighth note E4. The fourth measure has a dotted quarter note D4, an eighth note C4, and an eighth note B3. The fifth measure has a dotted quarter note A3, an eighth note G3, and an eighth note F3. The sixth measure has a dotted quarter note E3, an eighth note D3, and an eighth note C3. The seventh measure has a dotted quarter note B2, an eighth note A2, and an eighth note G2. The eighth measure has a dotted quarter note F2, an eighth note E2, and an eighth note D2. The ninth measure has a dotted quarter note C3, an eighth note B2, and an eighth note A2. The tenth measure has a dotted quarter note B2, an eighth note A2, and an eighth note G2. The eleventh measure has a dotted quarter note A2, an eighth note G2, and an eighth note F2. The twelfth measure has a dotted quarter note G2, an eighth note F2, and an eighth note E2. A triplet of eighth notes (G2, F2, E2) is marked with a '3' below it. The piece ends with a double bar line and repeat dots.

Tamm kreiz

♩ = 75



♩ = 150

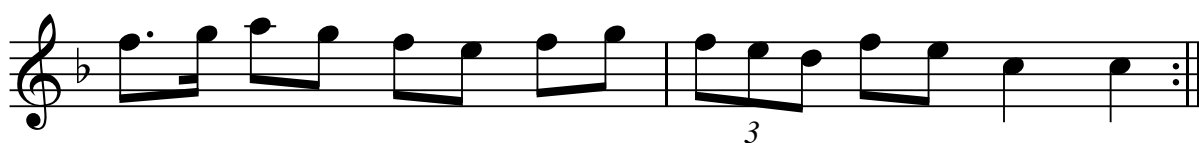


Ton diwezhan

A



B



QR-Code du MP3



Notes: Partition pour clarinette Sib

Transcription: Roger Négaret (roger.negaret@laposte.net) (94-95)