

Gavotte : Suite Dardoup

Trad. (Bretagne)

♩ = 130

Appel à la danse

Musical notation for the 'Appel à la danse' section, consisting of four staves of music in 4/4 time with a key signature of one flat. The first staff has chords F and C. The second and third staves have chords Dm, F, and C, with triplets marked '3'. The fourth staff has a Dm chord.

TS1

Musical notation for the 'TS1' section, consisting of two staves of music in 4/4 time with a key signature of one flat. Both staves have chords Dm, F, and C, with triplets marked '3'. The first staff ends with a repeat sign.

TS2

Musical notation for the 'TS2' section, consisting of two staves of music in 4/4 time with a key signature of one flat. The first staff has chords F and C. The second staff has chords Dm, F, C, and Dm, with triplets marked '3'. Both staves end with a repeat sign.

TS3

Musical notation for the 'TS3' section, consisting of one staff of music in 4/4 time with a key signature of one flat. The staff has chords F and C, with triplets marked '3'. The staff ends with a repeat sign.

A musical score for a short piece in D minor. The notation is on a single staff with a treble clef and a key signature of one flat (Bb). The piece consists of two measures. The first measure contains a melody starting on D4, moving to E4, F4, G4, and A4, with a dotted quarter note on F4. The second measure contains a melody starting on G4, moving to F4, E4, and D4, with a dotted quarter note on F4. Chords are indicated above the staff: Dm above the first measure, F above the first measure, C above the second measure, and Dm above the second measure. The piece ends with a double bar line and repeat dots.

Bal1

Musical notation for Bal1, consisting of three staves of music in 6/8 time. The first staff has a repeat sign and a double bar line. The second staff has a '4' below it. The third staff ends with a double bar line.

Bal2

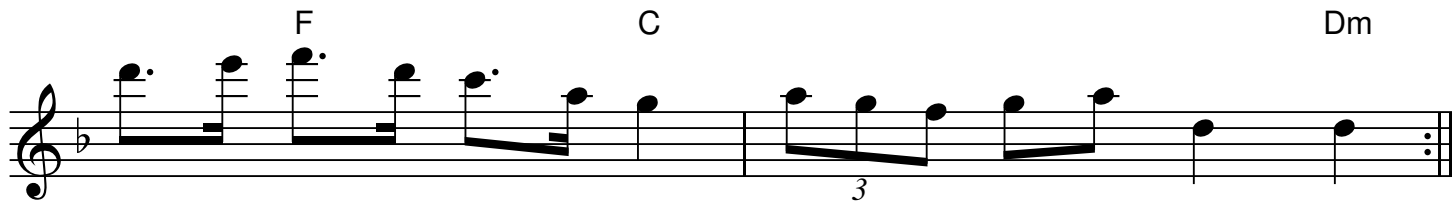
Musical notation for Bal2, consisting of two staves of music in 4/4 time. The first staff has a repeat sign and a double bar line. The second staff has a tempo marking $\text{♩} = 130$ and a '4' below it.

TD1

Musical notation for TD1, consisting of three staves of music in 6/8 time. Chords C, F, Dm, B \flat , F, Dm, C, Am, F, B \flat , C, Dm are indicated above the notes. A '3' is written below the first staff.

TD2

Musical notation for TD2, consisting of two staves of music in 6/8 time. Chords C, Dm, F, C, Dm, F, C, B \flat , C are indicated above the notes. A '3' is written below the first staff.



QR-Code du MP3



Notes: Partition pour clarinette Sib

Transcription: Roger Négaret (roger.negaret@laposte.net) (94-95)