

Gavotte : Suite Dardoup

Trad. (Bretagne)

♩ = 130

Appel à la danse

Musical notation for the 'Appel à la danse' section. It consists of four staves of music in 4/4 time. The key signature has two flats (B-flat and E-flat). The melody is written in a single voice. The first staff has a 4/4 time signature. The second and third staves feature triplets of eighth notes. The fourth staff concludes the section. Chords are indicated above the notes: Eb, Bb, Eb, Cm, Eb, Bb, Cm, Cm, Eb, Bb, Cm.

TS1

Musical notation for the 'TS1' section. It consists of two staves of music in 4/4 time. The key signature has two flats. The melody is written in a single voice. The first staff has a repeat sign at the beginning and end. The second staff also has a repeat sign. Both staves feature triplets of eighth notes. Chords are indicated above the notes: Cm, Eb, Bb, Cm, Eb, Bb, Cm.

TS2

Musical notation for the 'TS2' section. It consists of two staves of music in 4/4 time. The key signature has two flats. The melody is written in a single voice. The first staff has a repeat sign at the beginning and end. The second staff also has a repeat sign. Both staves feature triplets of eighth notes. Chords are indicated above the notes: Eb, Bb, Eb, Cm, Eb, Bb, Cm.

TS3

Musical notation for the 'TS3' section. It consists of one staff of music in 4/4 time. The key signature has two flats. The melody is written in a single voice. The staff has a repeat sign at the beginning and end. It features triplets of eighth notes. Chords are indicated above the notes: Eb, Bb, Eb.

A single staff of music in C minor, starting with a treble clef and a key signature of two flats (Bb and Eb). The melody consists of the following notes: G4 (quarter), Ab4 (quarter), Bb4 (quarter), C5 (quarter), Bb4 (quarter), Ab4 (quarter), G4 (quarter), F4 (quarter), Eb4 (quarter), D4 (quarter), C4 (quarter), and Bb3 (quarter). Above the staff, the chords Cm, Eb, Bb, and Cm are indicated. The piece concludes with a double bar line and repeat dots.

Bal1

Musical notation for Bal1, consisting of three staves of music in 6/8 time signature. The first staff contains a melodic line with a repeat sign. The second staff contains a rhythmic accompaniment with a '4' marking under a group of notes. The third staff concludes the piece with a double bar line.

Bal2

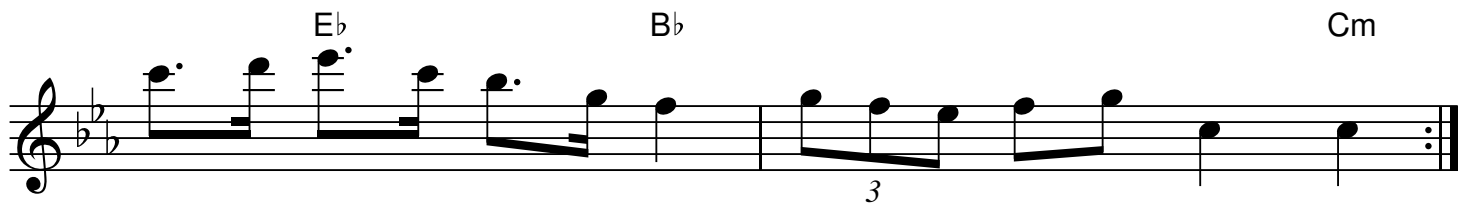
Musical notation for Bal2, consisting of two staves of music in 4/4 time signature. The first staff contains a melodic line with a repeat sign. The second staff contains a rhythmic accompaniment with a tempo marking of ♩ = 130.

TD1

Musical notation for TD1, consisting of three staves of music. Chord symbols are placed above the notes: B \flat , E \flat , Cm, A \flat , E \flat , Cm, B \flat , Gm, E \flat , A \flat , B \flat , Cm. A '3' marking is present under the first staff.

TD2

Musical notation for TD2, consisting of two staves of music. Chord symbols are placed above the notes: B \flat , Cm, E \flat , B \flat , Cm, E \flat , B \flat , A \flat , B \flat . A '3' marking is present under the first staff.



QR-Code du MP3



Notes: Partition pour piano

Transcription: Roger Négaret (roger.negaret@laposte.net) (94-95)