

Gavotte, suite Duo2R, Coateval

Trad. (Bretagne)

Ton simpl, Coateval

♩ = 120



Ton simpl, Kendirvi A

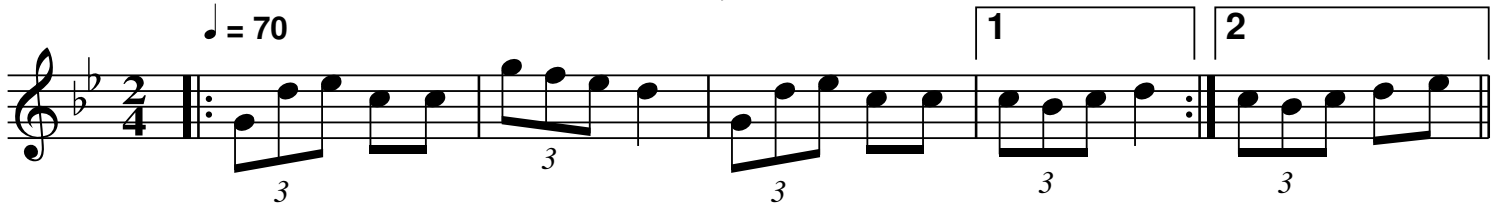


Ton simpl, Kendirvi C



Tamm kreiz, Ronan Robert

♩ = 70



♩ = 140



Tamm kreiz, Roger Négaret

♩ = 80

Musical notation for 'Tamm kreiz' in 6/8 time, key of B-flat major. The piece consists of a single melodic line with a tempo of 80 beats per minute. The melody is composed of eighth and quarter notes, with some dotted rhythms.

♩ = 140

Musical notation for 'Tamm kreiz' in 6/8 time, key of B-flat major. This is a faster version of the piece with a tempo of 140 beats per minute. The melody is similar to the first version but with a more rhythmic feel.

Ton doubl, Scignac

♩ = 130

Musical notation for 'Ton doubl, Scignac' in 4/4 time, key of B-flat major. The tempo is 130 beats per minute. The piece features a melodic line with a repeat sign and a key signature change to B major for a few notes.

Musical notation for 'Ton doubl, Scignac' in 4/4 time, key of B-flat major. This section includes a triplet of eighth notes and a repeat sign.

Musical notation for 'Ton doubl, Scignac' in 4/4 time, key of B-flat major. This section shows two first endings, labeled '1' and '2', leading to different conclusions of the piece.

Ton doubl, Kendirvi D

♩ = 120

Musical notation for 'Ton doubl, Kendirvi D' in 12/8 time, key of B-flat major. The tempo is 120 beats per minute. The piece features a melodic line with a repeat sign and a key signature change to B major.

Musical notation for 'Ton doubl, Kendirvi D' in 12/8 time, key of B-flat major. This section shows two first endings, labeled '1' and '2', leading to different conclusions of the piece.

QR-Code du MP3



Notes: *Partition pour piano*

Transcription: *Roger Négaret, novembre 2008 (roger.negaret@gmail.com)*