

Gavotte, ton diwezhan A

Bretagne

Musical score for 'Gavotte, ton diwezhan A' in G major, 4/4 time. The score consists of four staves. The first three staves contain the main melody with various rhythmic patterns and triplets. The fourth staff is a repeat sign with three triplets. The key signature has one sharp (F#) and the time signature is 4/4.

Gavotte René

Trad. (Bretagne)

Musical score for 'Gavotte René' in B-flat major, 4/4 time. The score consists of two staves. The first staff begins with a tempo marking of ♩ = 130. The key signature has two flats (Bb and Eb) and the time signature is 4/4. The score features a variety of rhythmic patterns and triplets.

Notes: Partition pour piano

Transcription: Roger Négaret, 23 novembre 2005 (roger.negaret@laposte.net)

Gavotte, ton diwezhan B

Trad. (Bretagne)

Musical notation for the piece 'Gavotte, ton diwezhan B'. It consists of three staves of music in 4/4 time, key of D major. The first staff contains the first four measures. The second staff contains measures 5 through 8, with a first ending bracket over the final two measures. The third staff contains the second ending, which concludes the piece.

Notes: Partition pour piano

Transcription: Roger Négaret (roger.negaret@laposte.net) (Août 98)

Gavotte, ton diwezhan C

Trad. (Bretagne)

Musical notation for the piece 'Gavotte, ton diwezhan C'. It consists of four staves of music in 4/4 time, key of D major. The first two staves contain the first four measures. The third and fourth staves contain measures 5 through 8, featuring triplet markings (indicated by a '3' below the notes) in measures 5, 6, 7, and 8.

Notes: Partition pour piano

Transcription: Roger Négaret (roger.negaret@laposte.net) (Août 98)

Gavotte, ton diwezhan D

Trad. (Bretagne)

Two staves of musical notation in 4/4 time, key of D minor. The first staff contains the first line of the melody, and the second staff contains the second line. Both staves feature triplet markings (3) under groups of three notes.

Notes: Partition pour piano

Transcription: Roger Négaret (roger.negaret@laposte.net) (Août 98)

Gavotte, ton diwezhan E

trad (France)

Two staves of musical notation in 6/8 time, key of E major. The first staff starts with a tempo marking of ♩ = 120. The second staff contains the second line of the melody. The notation is simple, consisting of quarter and eighth notes.

Gavotte, ton diwezhan Patrick Lefevre A

Trad. (Bretagne)

Two staves of musical notation in 4/4 time, key of A major. The first staff contains the first line of the melody, and the second staff contains the second line. Both staves feature triplet markings (3) under groups of three notes.

Source: Patrick Lefèvre

Notes: Partition pour piano

Transcription: Roger Négaret (roger.negaret@laposte.net) (Août 98)

Gavotte, ton diwezhan Patrick Lefevre B

Trad. (Bretagne)



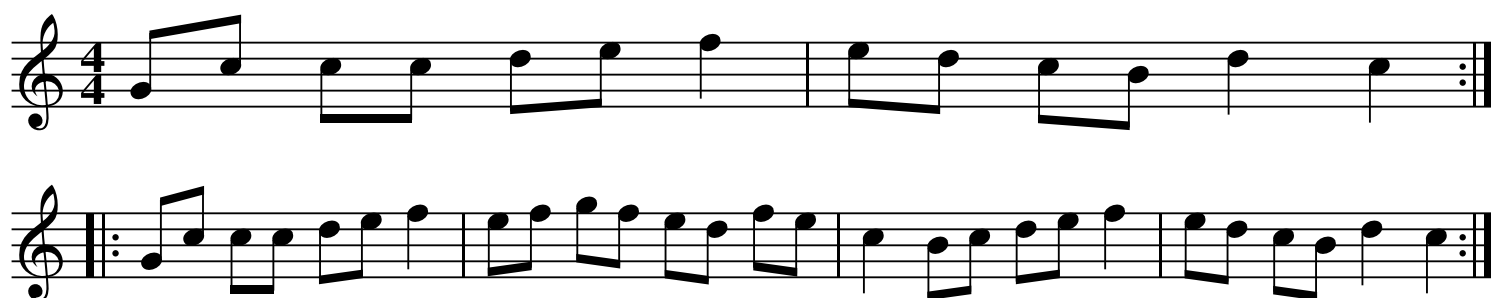
Source: Patrick Lefèvre

Notes: Partition pour piano

Transcription: Roger Négaret (roger.negaret@laposte.net) (Août 98)

Gavotte, ton diwezhan Rachel

Trad. (Bretagne)

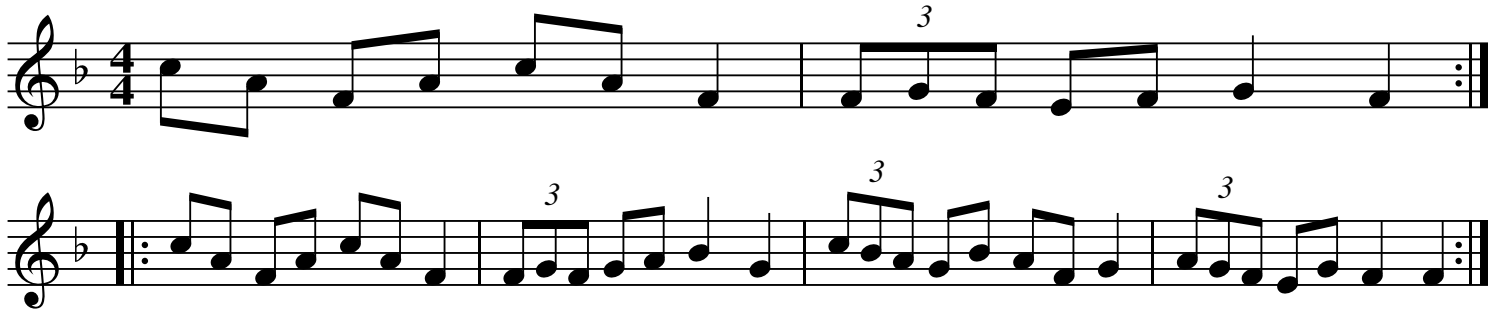


Notes: Partition pour piano

Transcription: Roger Négaret (roger.negaret@laposte.net) (Août 98)

Gavotte, ton diwezhan Saint André

Trad. (Bretagne)



QR-Code du MP3



Notes: *Partition pour piano*

Transcription: Roger Négaret (roger.negaret@laposte.net) (Août 98)