

# Loudéac : Suite Termen

Trad. (Bretagne)

♩ = 130

## Rond, Celle que mon coeur aime

Musical notation for the first piece, 'Rond, Celle que mon coeur aime'. It is written in 2/4 time with a tempo of 130. The melody is on a single staff. It begins with a repeat sign. The first ending is marked '1' and the second ending is marked '2'. The piece concludes with a double bar line.

♩ = 90

## Baleu Lisette et Lison (voix 1)

Musical notation for the first voice part of 'Baleu Lisette et Lison'. It is written in 6/8 time with a tempo of 90. The melody is on a single staff. It begins with a repeat sign. The first ending is marked '1' and the second ending is marked '2'. The piece concludes with a double bar line.

Second staff of musical notation for 'Baleu Lisette et Lison (voix 1)'. It continues the melody from the first staff.

Third staff of musical notation for 'Baleu Lisette et Lison (voix 1)'. It continues the melody from the first staff.

## Voix 2

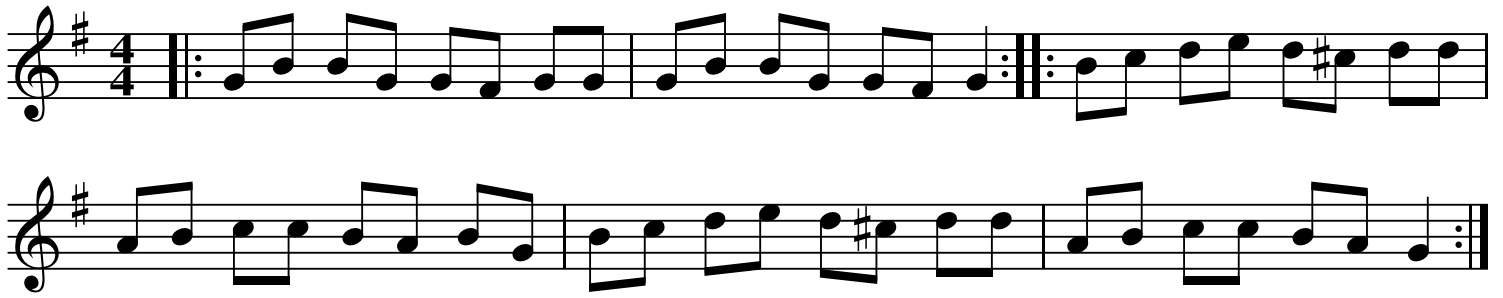
Musical notation for the second voice part of 'Baleu Lisette et Lison'. It is written in 6/8 time with a tempo of 90. The melody is on a single staff. It begins with a repeat sign. The first ending is marked '1' and the second ending is marked '2'. The piece concludes with a double bar line.

Second staff of musical notation for 'Baleu Lisette et Lison (voix 2)'. It continues the melody from the first staff.

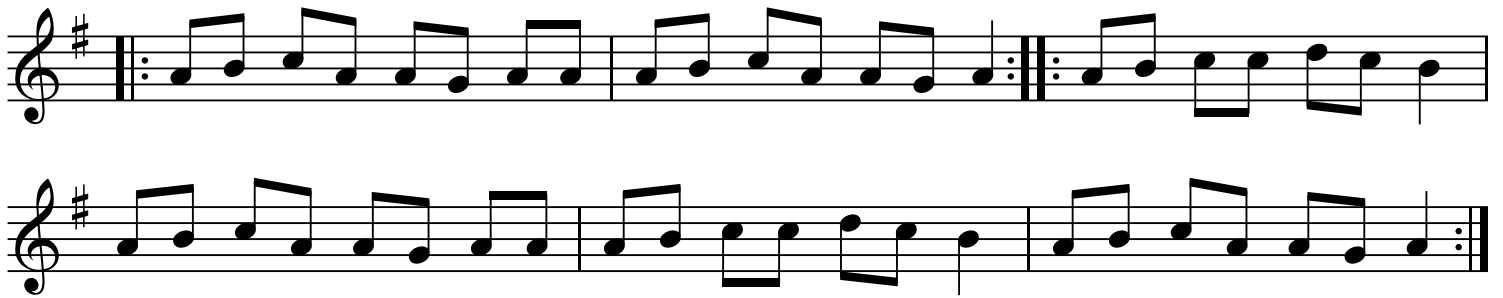
Third staff of musical notation for 'Baleu Lisette et Lison (voix 2)'. It continues the melody from the first staff.

♩ = 130

## Rond : l'avocat : couplets 1 à 5

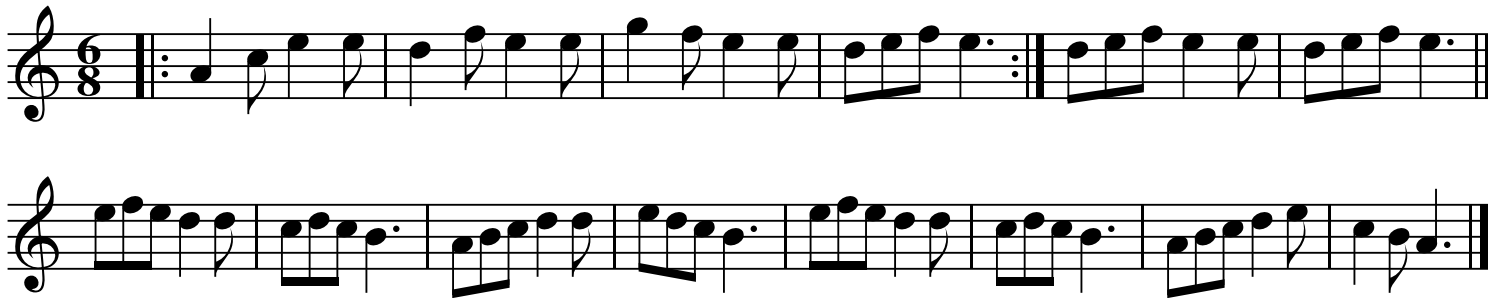


## Couplets 6 à 10



♩ = 120

## Riquenié Termen



QR-Code du MP3



Notes: Partition pour piano

Transcription: Roger Négaret, mars 2016 (roger.negaret@laposte.net)