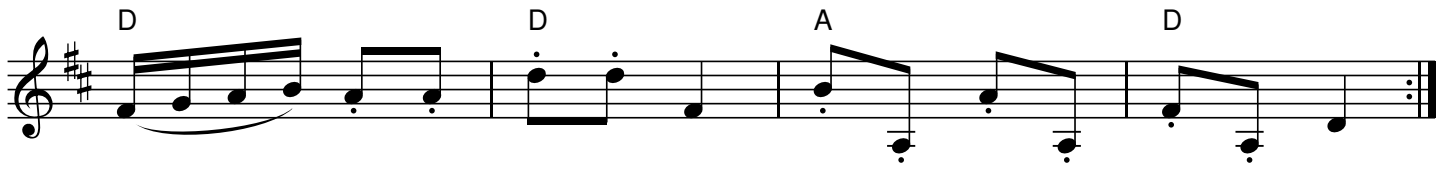


# Polka : Champagne

England

♩ = 120

The musical score for "Polka : Champagne" is written in treble clef with a key signature of three sharps (F#, C#, G#) and a 2/4 time signature. The tempo is marked as ♩ = 120. The score consists of ten staves of music. The first two staves are the first system, the next two are the second system, and the final six are the third system. The chords are indicated above the notes. The first system has chords A, Bm, E7, and A. The second system has chords F#m, Bm, C#7, and F#m. The third system has chords A, Bm, E7, and A. The fourth system has chords A, Bm, E7, and A, with the word "Eine" written above the final measure. The fifth system has chords D, D, A, and D. The sixth system has chords D, D, A, and D. The seventh system has chords G, D, A#7, and D. The eighth system has chords G, D, A, and D. The ninth system has chords D, D, A, and D. The tenth system has chords D, D, A, and D. The score ends with a double bar line and repeat dots.



QR-Code du MP3



*Book: "The Fiddler of Helperby", Dragonfly Music, ISBN 1-872277-18-7, 1994.*

*Source: RR\_OriginalCollection: <URL:<http://www.leeds.ac.uk/music/Info/RR TuneBk/>>*

*Notes: Partition pour clarinette Sib  
Dance Music, 1820-1850*

*Transcription: Warren Armstrong*