

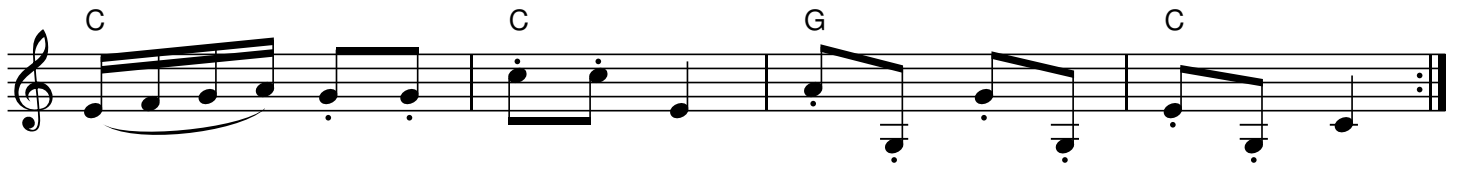
# Polka : Champagne

England

♩ = 120

The musical score for "Polka: Champagne" is written in treble clef with a key signature of one sharp (F#) and a 2/4 time signature. The tempo is marked as ♩ = 120. The score consists of ten staves of music. The first six staves are the main melody, and the last four staves are a bass line. Chord symbols are placed above the notes. The melody starts with a repeat sign and a double bar line. The bass line also starts with a repeat sign and a double bar line. The piece ends with a double bar line and a repeat sign.

Chord symbols: G, Am, D7, G, Em, B7, Dine, C, G#7.



QR-Code du MP3



*Book: "The Fiddler of Helperby", Dragonfly Music, ISBN 1-872277-18-7, 1994.*

*Source: RR\_OriginalCollection: <URL:<http://www.leeds.ac.uk/music/Info/RR TuneBk/>>*

*Notes: Partition pour piano*

*Dance Music, 1820-1850*

*Transcription: Warren Armstrong*